



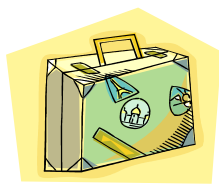
The Welby Practice

Patient Newsletter

Travel Health

Special points of interest:

- Travel Health
- Online Access
- MenC Freshers
- Extended Opening Hours
- Named GP
- Staff Update

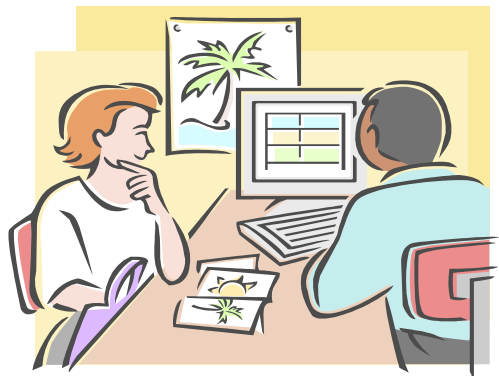


Last year an estimated 57 million UK residents travelled

abroad, 4% up from the previous year (ONS, 2015). That's a lot of work for our practice nurses and travel clinics. If you are one of the millions going to travel abroad this year make sure booking in with the nurse for your travel risk assessment is not at the bottom of your check list! Your travel health should be a priority when planning your trip. Please complete a travel assessment form available online or from reception and return it at least **8 weeks** prior to travel.

Travel Checklist:

1. ~~Holiday/Business Trip Booked~~
2. ~~Sun care lotion~~
3. ~~Bags packed~~
4. ~~Passport~~
5. ~~Currency~~
6. Book in with the nurse



Online Access to your Summary Care Record

You are now able to access your Summary Care Record which provides you with information on any medications you may be taking and any medications that you have a documented allergy or sensitivity to.

Did you know that you are now able to order repeat prescriptions and book appointments online? To register for these services please attend your local surgery with a form of photo identity and you will be provided with the necessary information to access these services.

Meningococcal (MenC) Freshers Vaccination



The meningococcal (MenC) freshers vaccination programme introduced in April last year will continue to run throughout this year. This programme was introduced to protect students attending university for the first time, who are at increased risk of contracting MenC disease because the disease can

spread rapidly where people live in close proximity to each other, e.g. in university halls of residence or shared accommodation.

Please consider the following eligibility criteria below:

1. are attending university/ further education for the first time,

2. are aged from 17 to 25 inclusive,
3. have not previously had any MenC containing vaccine since the age of 10.

If you or a family member are attending university or further education for the first time this year please contact your local surgery and book an appointment with the nurse.

Extended Opening Hours

Starting this July the Practice will offer pre-bookable appointments from 6:30pm—7:30pm every Thursday evening at Bottesford through two clinicians. The Practice hopes this service will accommodate those individuals that are unable to attend during daytime hours.

Named GP

As part of the NHS contract all patients (including children), have been allocated a named accountable GP who is responsible for patients' overall care at the Practice. Please contact the Practice if you wish to know who your named GP is. If you have a preference as to which your named GP is please inform a member of the reception team and we will try and accommodate this request.

Staff update

After much consideration Dr Field-Lucas decided to leave the Practice and we wish him the best of luck in his future career. It is with great pleasure to introduce Jo Perez our new Advanced Nurse Practitioner to the Practice, the service she provides has already become well established within the Practice and is a true credit to the team, we are sure you will find her role to be very accommodating. A big welcome back to our Practice Nurse Becky and Dispenser/Receptionist Jane who have both returned to work at the Practice and a warm welcome to our new Receptionists Katie and Jo. We hope they all enjoy working at The Welby Practice.